



Funding available for housing providers under the LIFE Clean Energy Transition call

*Adrien Bullier, Senior Project Adviser
Nina Klemola, Project Adviser*

*European Climate, Infrastructure and
Environment Executive Agency (CINEA)*



- Introduction to the LIFE Clean Energy Transition calls
- Large-scale rollout of industrialised deep renovation solutions (LIFE-2021-CET-BUILDRENO) + Q&A
- Integrated Home Renovation Services (LIFE-2021-CET-HOMERENO) + Q&A
- Disruptive PDA – Technical Assistance to advance market boundaries for sustainable energy investments (LIFE-2021-CET-PDA) + Q&A
- Addressing building related interventions for vulnerable districts





The LIFE Clean Energy Transition call for proposals



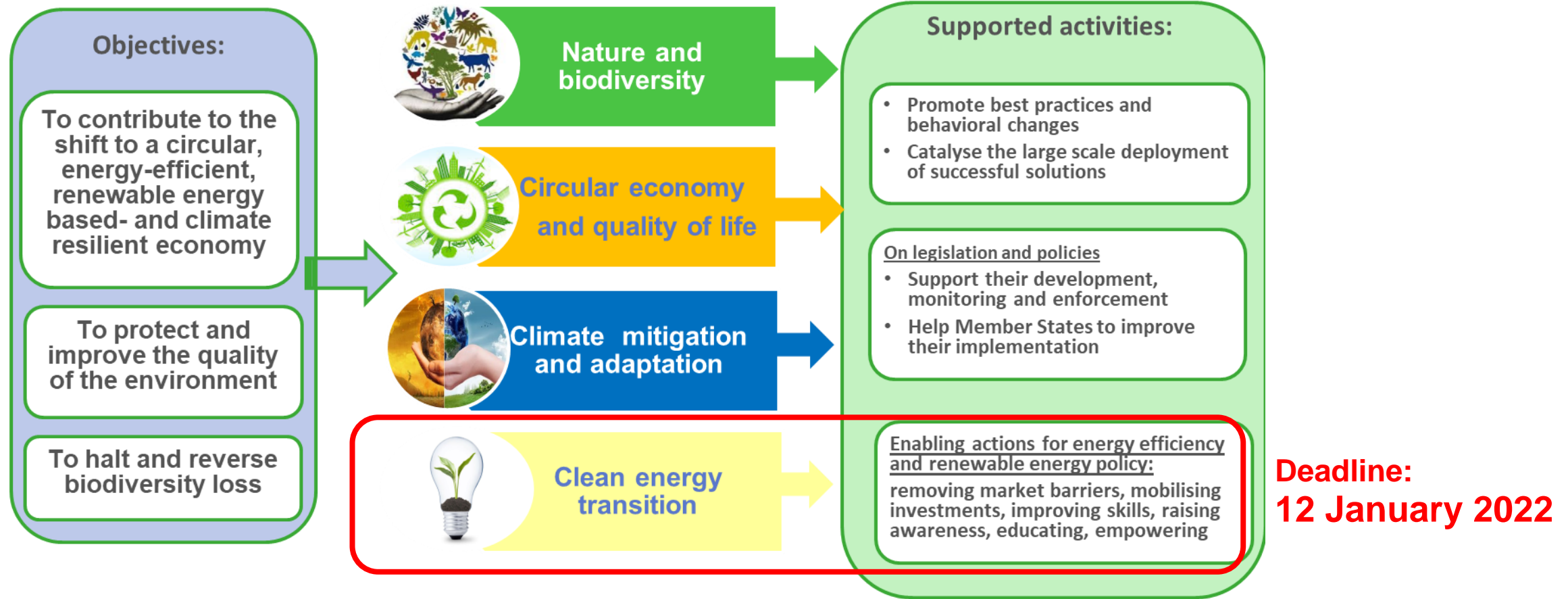


2003-2013
Intelligent Energy Europe
~ EUR 1bn
~1,000 projects in EE and RES

2014-2020
Horizon 2020 Energy Efficiency
~EUR 800m
>400 projects

2021-2027
LIFE Clean Energy
Transition
~ EUR 1bn

LIFE- Clean Energy Transition



LIFE- Clean Energy Transition



Creating market & regulatory enabling conditions:

- ✓ Remove market barriers
- ✓ Mobilise investments
- ✓ Build capacity, improve skills
- ✓ Raise awareness
- ✓ Educate, empower

Coordination and Support Actions (CSA)

- Develop and replicate EU-wide best practice on EE and RES policy and address market barriers identified in the Call for Proposals:
 - responding to detailed requirements in response to policy needs;
 - EU-widely validated results feeding into EU policy making;
 - require no equipment costs, mainly labour costs
- For most topics minimum 3 participants from 3 eligible countries
- Typical budget range 1-2 million euros
- Funding rate: 95%

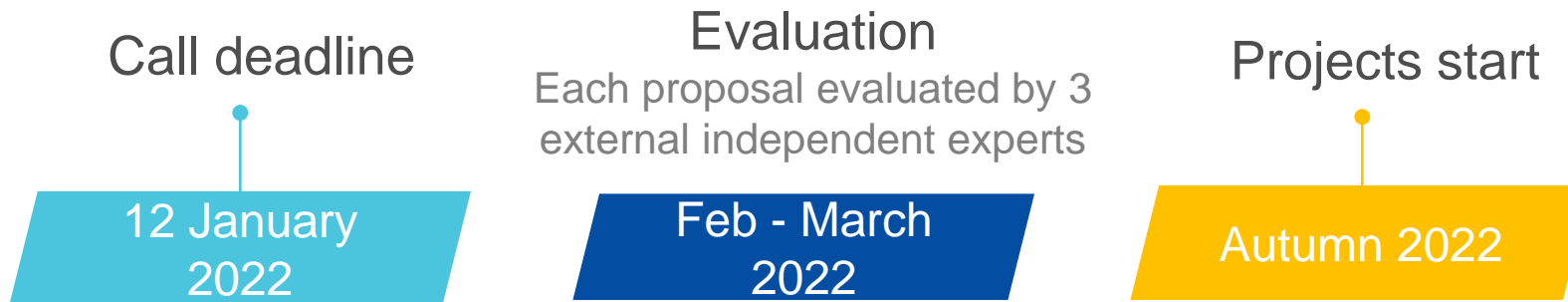


Call 2021: 5 intervention areas and 18 topics

- Building a national, regional and local **policy framework** supporting the CET (3 topics)
- Accelerating technology roll-out, digitalisation, **new services and business models** and enhancement of the related professional skills on the market (7 topics)
- Attracting **private financing** for sustainable energy (2 topics)
- Supporting the development of local and regional **projects** (3 topics)
- Involving and empowering **citizens** in the clean energy transition (3 topics)
- **Detailed presentations per topic** (slides and recordings) on the [LIFE website](#)
- FAQs are published for each topic on the [Funding and Tenders Portal](#)



I have an idea for a topic open under LIFE-CET in 2021 – How do I proceed?



- All info (including FAQs) and submission via the [Funding & Tenders Portal](#)
- 1 Call (94,5 M€), 18 topics = 1 [Call document](#) = 1 deadline = 60-65 projects



Keep in touch with us



https://cinea.ec.europa.eu/life/clean-energy-transition_en/



[@CleanEnergy_EU](#), [@LIFEprogramme](#)



[European Climate, Infrastructure and Environment Executive Agency](#)



[LIFE youtube channel](#)





Addressing building related interventions for vulnerable districts (LIFE-2021-CET-ENERPOV)



Nina Klemola, CINEA Unit D.1

Objectives

Type of action: **Other Action Grants - CSA (95%)**

- Around 34 million people unable to keep their homes adequately warm
- Key risk factors: poor energy efficiency of dwellings, high energy expenditure and low incomes
- **Transform inefficient housing stock in vulnerable districts and reduce the negative effects on residents**
- Support to implementation of:
 - Renovation Wave
 - Commission Recommendation on Energy Poverty
 - Clean Energy for all Europeans package (EPBD, EED)



Scope (1/3)

Facilitate uptake of renovation approaches for large-scale rollout of building-related interventions

Vulnerable districts

Clusters of buildings with vulnerable residents

Groups of buildings with common management



Scope (2/3)

The proposed action should do one or a combination of the following:

Roll out holistic, industrialised deep renovation solutions

Develop and implement roadmaps of EE measures for social housing specifically

Develop and implement roadmaps of EE measures



Scope (3/3)

Focus on residential buildings: multifamily, private rented sector, **social housing**, owner-occupied

Occupant behavior and residents' buy-in to be built into strategy

Lower cost and delivery time of renovations

Avoid gentrification

Include proven measures for deep renovation

Multiple benefits for residents & LCA approaches



Expected impacts for energy poor households

- Number of buildings renovated
- Demonstration of effectiveness and replicability of proposed solutions for energy poor households
- Number of roadmaps created
- Number of energy poor consumers impacted
- Multiple benefits, such as improved mental and physical health, comfort and indoor environment, indoor air quality, improved social inclusion, reduced public health expenditure
- Primary energy savings/Renewable energy generation triggered by the project (in GWh/year).
- Investments in sustainable energy triggered by the project (cumulative, in million Euro)
- Indicators for measuring energy poverty

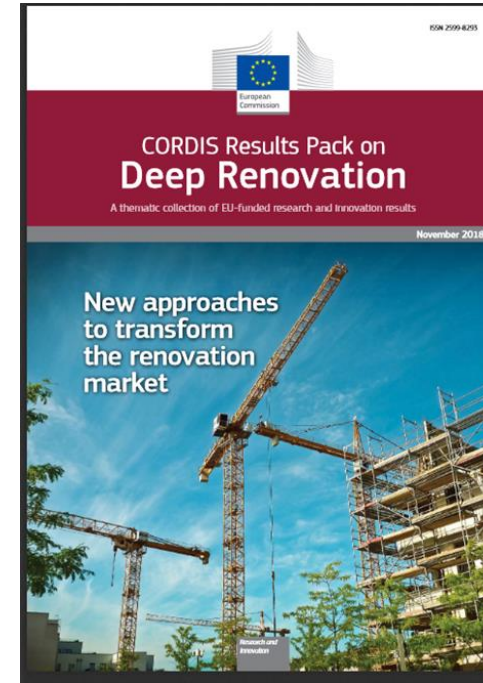


Key considerations for topic

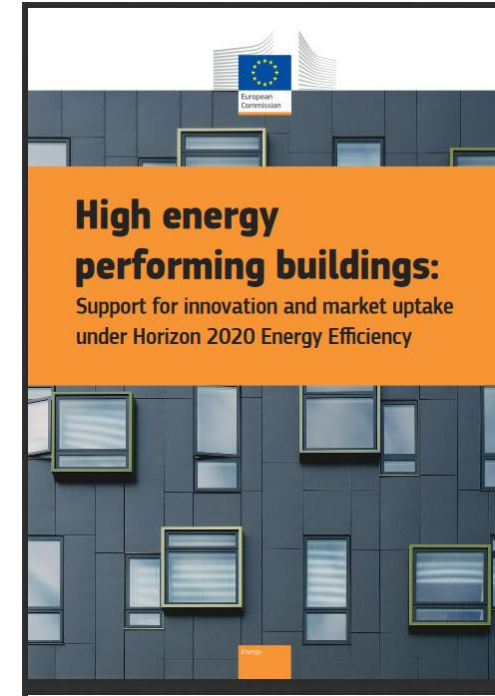
- Focus on building related interventions
- Focus on vulnerable/energy poor districts and/or groups of buildings → specific needs
- Ensure involvement of all relevant actors (e.g. local authorities, housing associations, societal/social intermediaries, energy communities)
- Take into account occupant support and their post-intervention behaviour
- Build on previous and existing initiatives and project results



Examples of previous and ongoing initiatives



Available [here](#)



Available [here](#)



Affordable Housing Initiative





Large-scale rollout of industrialised deep renovation solutions (LIFE-2021-CET-BUILDRENO)



Large-scale rollout of industrialised deep renovation solutions

OBJECTIVES

- Support the implementation of the **Renovation Wave Strategy**
- Facilitate a greater market uptake and large-scale rollout of holistic, **industrialised deep renovation solutions for buildings**
- Accelerate **rate and depth** of energy renovation through industrialised solutions
 - Higher quality renovations
 - Enhanced certainty of energy savings and a reduced performance gap



Large-scale rollout of industrialised deep renovation solutions

SCOPE

(1/2)

Actions supporting the development and promotion of solutions

- Tackling **market barriers**
- Increasing the **volume and depth** of energy renovation
- Reducing **investment costs**
- Reducing the **time** of on-site renovation
- Reducing **inconvenience** for occupants
- Making the whole **renovation process more attractive** for all those involved



Large-scale rollout of industrialised deep renovation solutions

SCOPE

(2/2)

- Proposals should build on:
 - **Technical innovation developed and tested in recent projects**, for example
 - standardised prefabrication and off-site construction
 - digital tools such as Building Information Modelling
 - plug & play technical building systems
 - **Non-technical innovation** for example
 - business models, performance guarantees, design and procurement processes
- Cover the **whole value chain**
- Can address **different types of buildings**



Large-scale rollout of industrialised deep renovation solutions

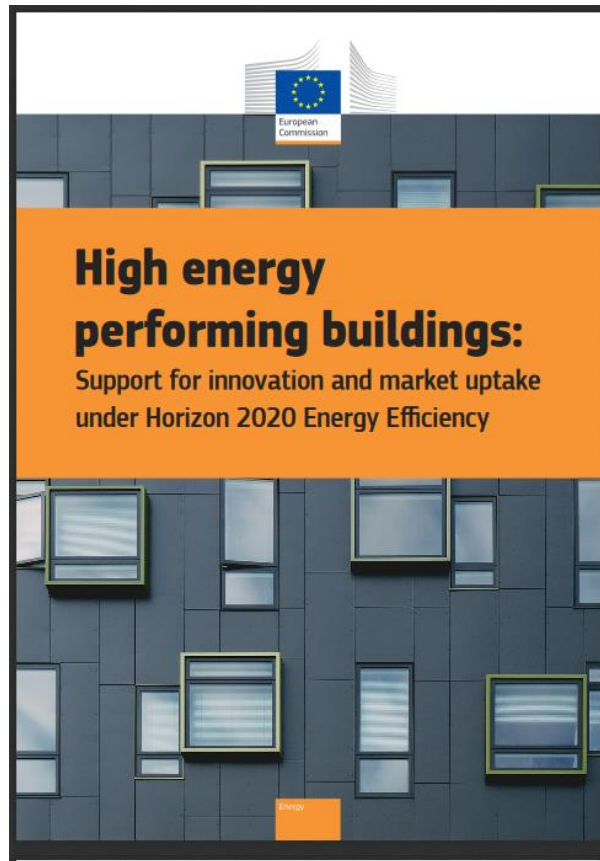
EXPECTED IMPACTS

- Cost optimal renovations with a performance guarantee for the end user
- Reduction of time for renovation works on the building site
- Demonstration of the effectiveness and replicability of the proposed solutions to lead to an increased rate of renovation
- Primary energy savings/Renewable energy generation triggered by the project (GWh/year)
- Investments in sustainable energy triggered by the project (cumulative, in million Euro)
- Reduction of the greenhouse gases emissions (in tCO₂-eq/year) and/or air pollutants (kg/year) triggered by the project

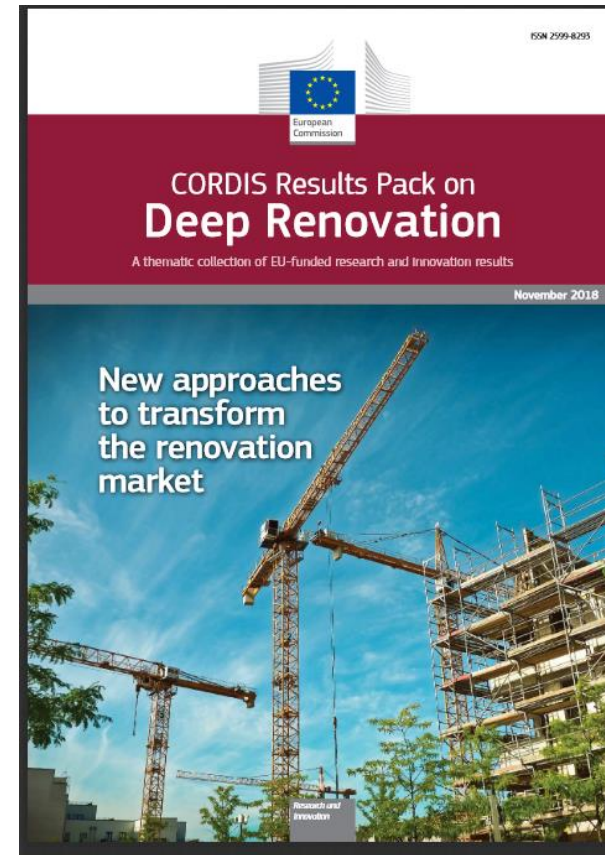


Large-scale rollout of industrialised deep renovation solutions

BUILDING ON PREVIOUS PROJECTS – INDICATIVE EXAMPLES



Available [here](#)



Available [here](#)





Integrated Home Renovation Services (LIFE-2021-CET-HOMERENO)

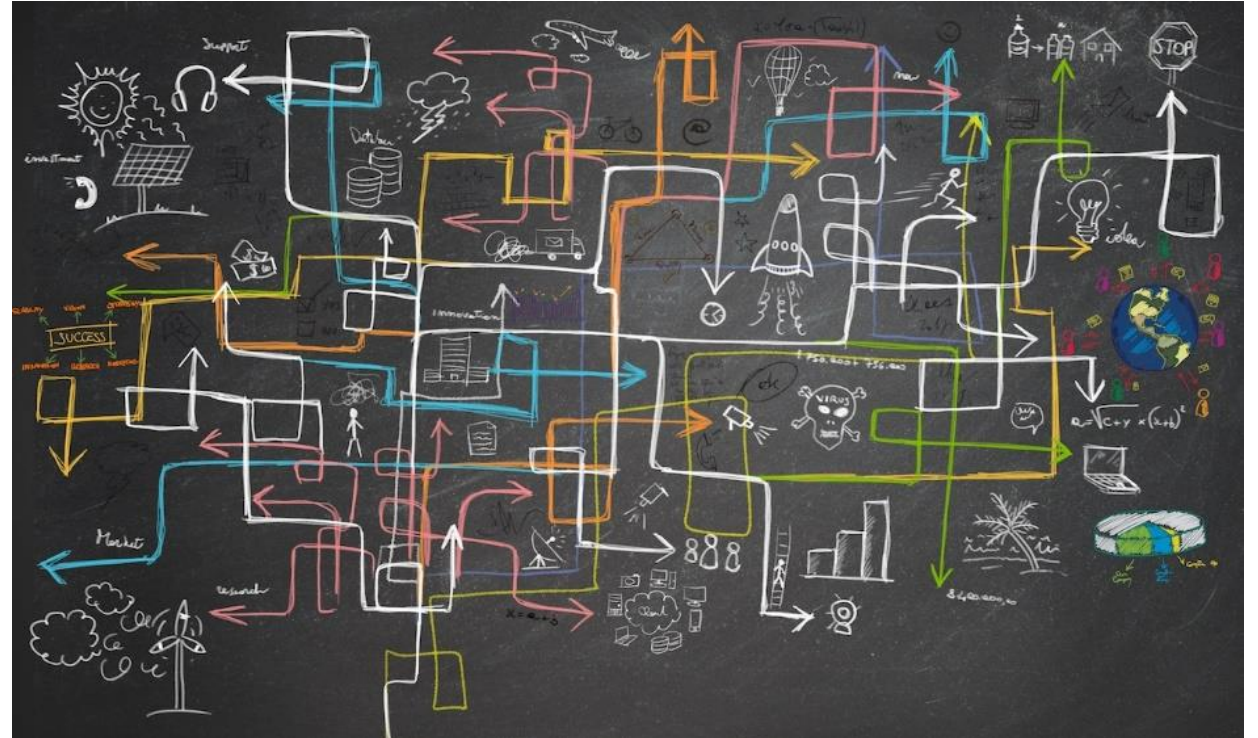


Why do people NOT renovate their home?

- Most homeowners lack the skills to set up, implement and finance ambitious projects
- Little incentive to build capacity
- Complexity increases with multiple ownership

and/or when facing

 energy poverty



How to reduce the burden on homeowners?

- Take on tasks for which homeowners are not well equipped
- Catalyse the evolution of market practices by developing:
 - Integrated
 - Home
 - Renovation



Services



Source: PxHere.com

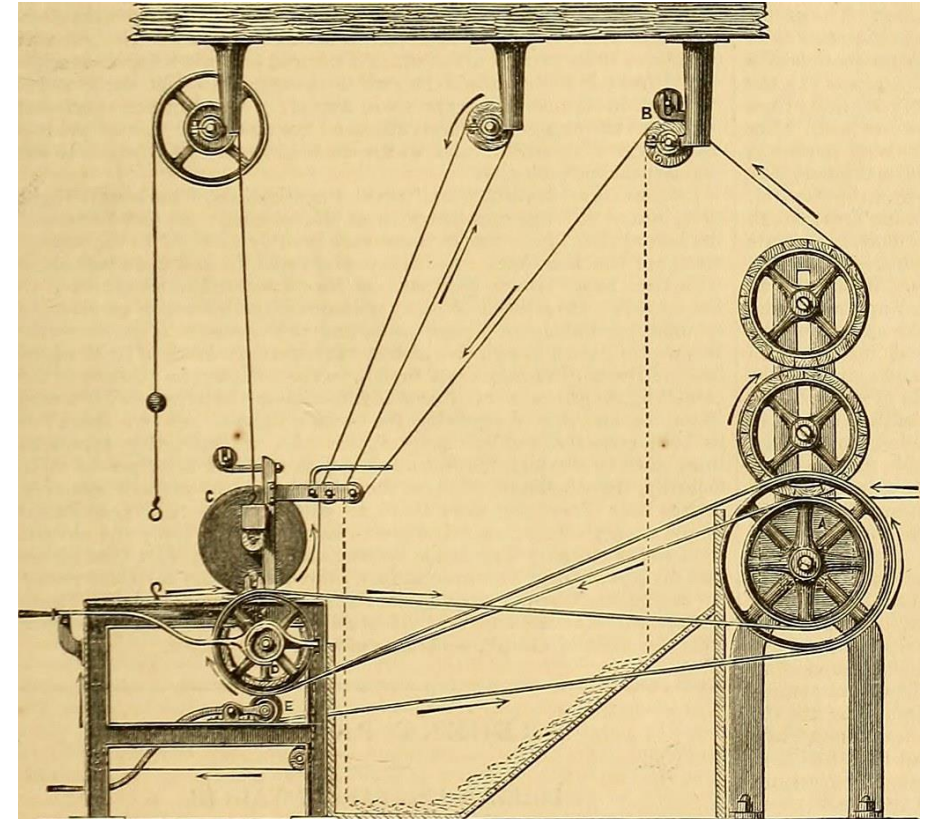
Create or replicate “Integrated Home Renovation Services”

- Reduce complexity and simplify homeowners’ decisions
- Connect all actors in the value chain
- Streamline access to various support measures
(especially where there is support for specific target groups)
- Improve awareness and trust towards such integrated services



Provide methods and support

- Build expertise and organisational innovations
- Ensure cost effectiveness and price transparency of services provided to homeowners
- Build homeowners trust through clear liabilities, quality assurance and dedicated consumer protection policies



Source: Internet Archive Book Images on Foter.com



Should investment phase be reached?

- **YES**, a pilot phase is expected...
- ... but no minimum volume prescribed for the investment pipeline
- No leverage ratio and payback clause in case of not reaching investment phase
- **Proposals should demonstrate their expected impacts**



CC0 Public Domain



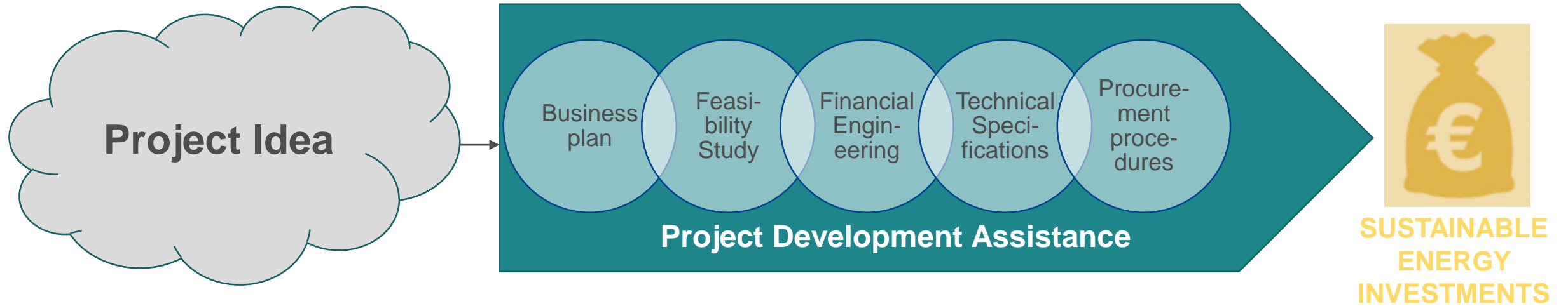


Disruptive PDA

Technical Assistance to advance market boundaries for sustainable energy investments (LIFE-2021-CET-PDA)



Project Development Assistance



Objectives

- **Build** technical, economic and legal **expertise** needed for project development
- Develop **organisational innovations** and minimise transaction costs
- High degree of **replicability**
- **Remove** legal, administrative and other market **barriers**
- **Aggregate** (pooling, bundling) projects to reach critical size
- **Mobilize private finance**



Scope

A clear **showcase dimension** in delivering innovative solutions to accelerate sustainable energy investments in Europe:

1. Development of scalable schemes, focussing on leveraging enhanced levels of private investment (e.g. EPC, blended funds, financial instruments or innovative on-bill and on-tax payment schemes) AND/OR



Scope

A clear **showcase dimension** in delivering innovative solutions to accelerate sustainable energy investments in Europe:

2. Organisational innovation for the mobilisation of the investment programme, e.g. setting up project development units, large-scale bundling and pooling of (mixed) assets (at district, city or wider geographical level); AND



Scope

A clear **showcase dimension** in delivering innovative solutions to accelerate sustainable energy investments in Europe:

3. In the ambition levels for energy savings and decarbonisation, such as deep renovation, NZEB standards, positive energy buildings or districts and/or highly energy efficient infrastructure.



Facts and figures

- Expected project size: € 0.5 – 1.5 million
- Leverage ratio: **1:15 / 1:10** for investments in residential buildings ONLY
- **Investments launched before** the end of the action!
- Proposals of consortia in a single member state are eligible!

